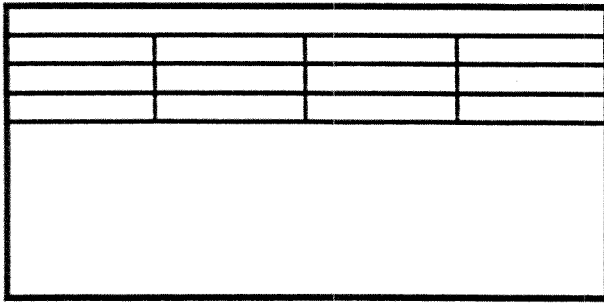


Before screening bridgedeck



Model 1: Clear Screening Deck Overhead



NOTES:

All brackets and wood painted to match structure

Supplies:

Hammer, staplegun

Ladder

Paint

nails, screws, staples, glue, brackets, etc.

patience

Materials:

2X4s: 16 foot, 1 ea.

2X2s: 12 foot, 4 ea.

1X2s: 12 foot, 9 ea.

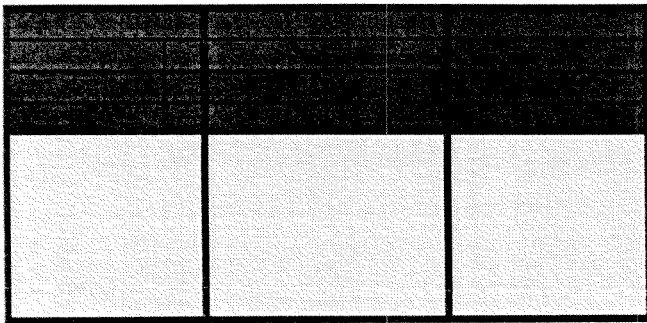
2X4 brackets: 8 ea.

strapping: 22 inch, 2 ea.

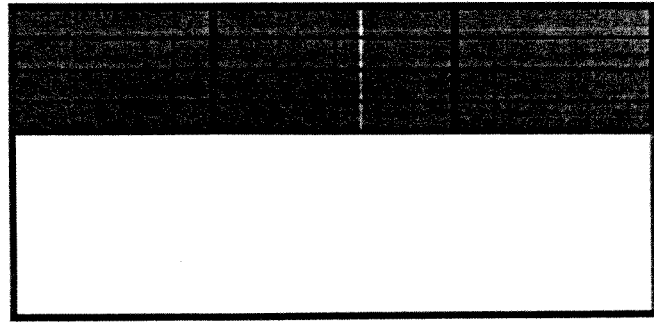
screening 60 wide, 30 feet

nails, glue, screws, paint, etc.

Model 2: Shadecloth lattice and screening



Mode 3: Shadecloth over lattice only



Materials:

2X4s: 16 foot, 1 ea.

2X2s: 12 foot, 4 ea.

1X2s: 12 foot, 12 ea.

2X4 brackets: 8 ea.

strapping: 22 inch, 2 ea.

screening 60 wide, 18 feet

shadecloth 60 wide, 12 feet

nails, glue, screws, paint, etc.

Materials:

2X2s: 4 foot, 4 ea.

1X2s: 6 foot, 6 ea.

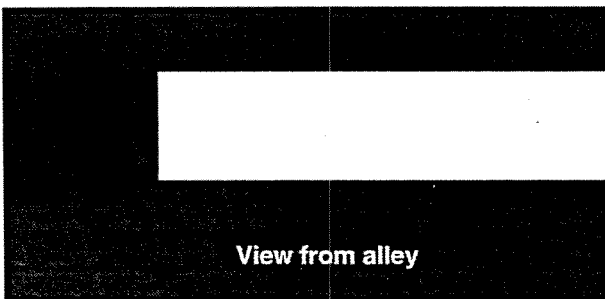
1X2s: 4 foot, 6 ea.

2X4 brackets: 8 ea.

shadecloth 60 wide, 12 feet

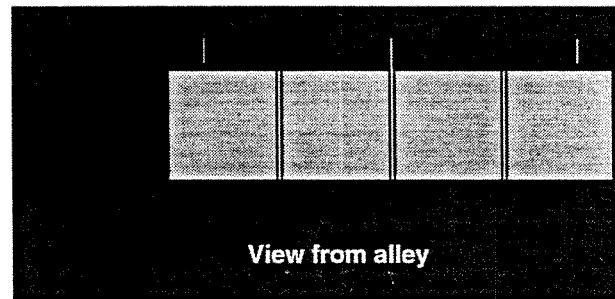
nails, glue, screws, paint, etc.

Before screening bridgedeck face



View from alley

Model 1: Clear Screening Bridgedeck face



View from alley

NOTES:

All brackets and wood painted to match structure

Supplies:

Hammer, staplegun

Ladder

Paint

nails, screws, staples, glue, brackets, etc.

Materials:

1X2s: 12 foot, 4 ea.

3/4" screen molding, 19 feet

4X4 brackets: 3 ea.

strapping: 12 inch, 3 ea.

screening 48 wide, 12 feet

nails, screws, staples, glue

2X2 pet rail if desired 12 ft. 2 ea

Description of proposed improvement: Screen the face and the top of bridgedeck. All wood materials and brackets will be painted with the same quality and color of paint used on the bridgedeck walls and rail. There will be no penetration to wood or stucco in the screening process. Screening material will be same quality and transparency as in a window or door screen. View from the top with show two 2X2s evenly spaced with screening between them. The lattice structure will show below the screening.

Ceiling Diagram 1:

Diagram 1 illustrates how the screening will look before installation and after installation of three screening options. In order to accommodate the no penetration requirement, we used 16 gauge steel strapping, prefabricated 2X4 and 4X4 brackets painted to match deck.

Total Screening: Suspend a 2X4 parallel under the lip of the stucco overhang. Use 16 gauge strapping to shape a bracket to hold the 2X4. Mount 4, 2X2s on 2X4 brackets positioned to suspend perpendicularly to the lattice section. The 2X2s should be cut long enough to reach the common back wall and the 2X4. Anchor the 2X2s to the 2X4. Each section (3 total should be about 5 feet apart). Build a 1X2 frame for each section. Stretch standard window screening over the opening and staple it to the side of the 1X2 frame. Screw the screen panel into the 2X2s and you have just screened the entire top of the bridgedeck.

Shadecloth Lattice Screening : Cut four 2X2 the length of the back common wall to about an inch over the first lattice board (approximately 4 feet). Install the 2X2s over the lattice beams by using a 2X4 bracket on the first and last lattice beam. Build 1X2 frame and attach the shadecloth to the frame. Insert frame between 2X2s and anchor with screws.

Shadecloth/screen combination: Suspend a 2X4 parallel under the lip of the stucco overhang. Use 16 gauge strapping to shape a bracket to hold the 2X4. Mount 4, 2X2s on 2X4 brackets and suspend them perpendicular to the lattice section. The 2X2s should be cut long enough to reach the common back wall and the 2X4. Anchor the 2X2 to the 2X4. Each section (3 total should be about 5 feet apart). Build two 1X2 frames for each section. Stretch standard window screening over the frame for the area from 2X4 to first lattice beam and stretch shadecloth over the frame from the back wall to the first lattice beam.. Screw the screen panel into the 2X2s and you have just screened the entire top of the bridgedeck.

Deck Face Diagram 2:

Build a 1X2 frame to fit inside the opening of the face (approximately 3 ft high by 12 ft. long). Evenly space and insert three cross braces. Stretch screening over opening and finish with cap strip. To mount in opening user 3 - 4X4 prefabricated brackets for the top and three custom brackets for the bottom. Using 16 gauge steel strapping, shape three brackets to fit over the bottom rail. Insert a bolt in the center of all brackets. Cut slots in the top bracket positions and drill holes in the bottom of the frame to match. After positioning frame, put metal plate over opening in top bracket slots. If desired, screw 2X2 to bottom brackets to form a ledge for pets to sit on.

North Rim Board Minutes

January 10, 1995

Architectural Modifications: After discussion and by unanimous agreement of the Board, only rafter hangers will be acceptable for plants and the modular screened patio cover designed and built by Kathy Davis was accepted as the standard modification for bridge decks. It was noted that this design has no wood penetrations and is completely portable. Kathy Davis agreed to provide detailed drawings for distribution to other owners wishing to make the same modification. Owners who wish to inspect the Davis modification may leave their name and evening telephone number with Management at 645-8288 and Kathy Davis will then contact the owner to set an appointment.

It was agreed that Management will have authority to grant approval for the Kathy Davis modification and that when shade cloth is used, the color is to be dark green. Any requests for variations of design or color will be submitted to the Board for approval.